

2019

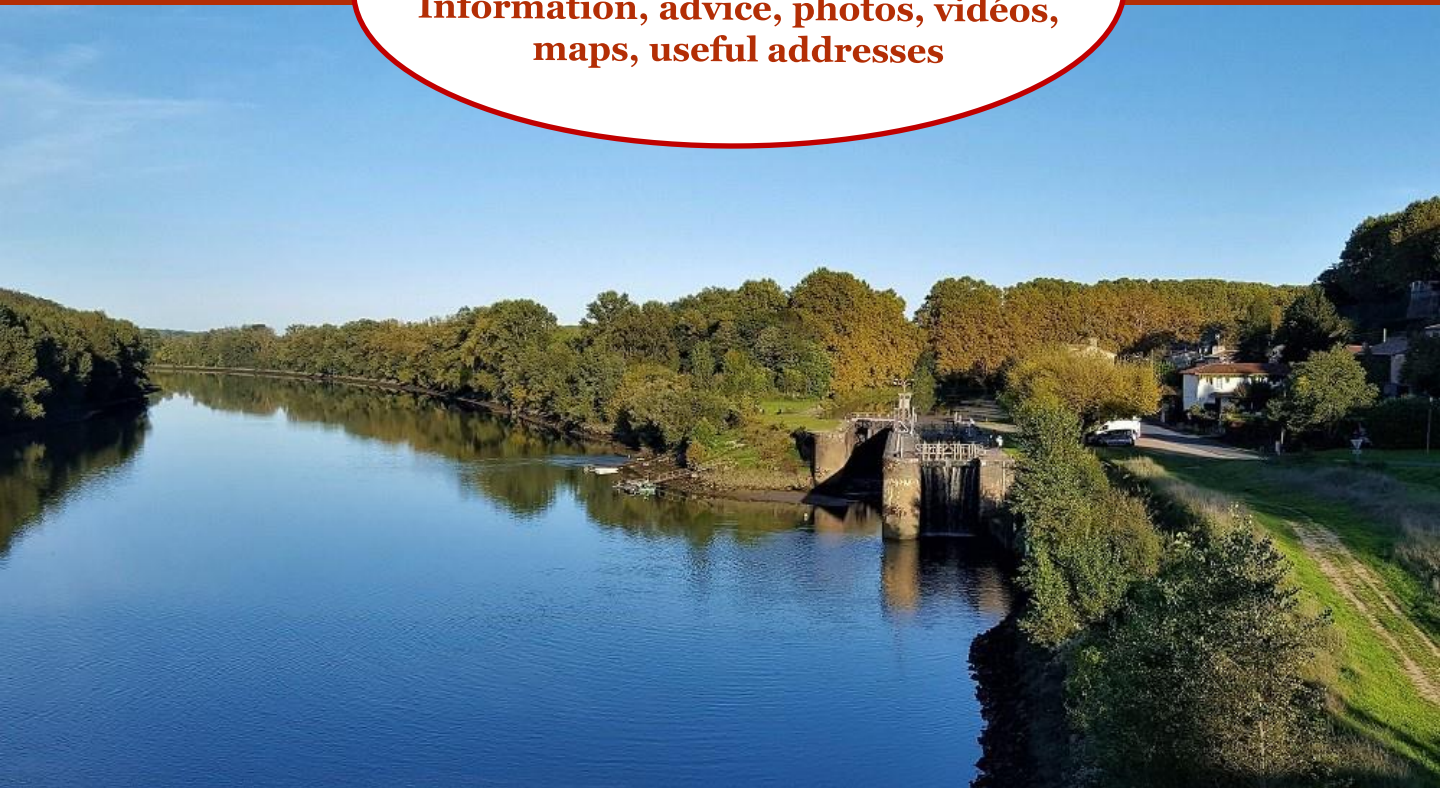


# The Garonne Canal, the Garonne river And the Gironde estuary

(From Toulouse to the Atlantic)

Boat, canoë,  
hiking, cycling, car

Information, advice, photos, vidéos,  
maps, useful addresses



## Canalfriends Travel Guide

The community of canal and river enthusiasts  
[www.canalfriends.com](http://www.canalfriends.com)



# This is Your guide

In 2014, we created canalfriends.com, the first collaborative waterways tourism platform in order to share our passion and that of enthusiasts.

The enthusiasm shown by participants in our 2016 Garonne Canal Discovery Day gave us the idea of producing collaborative travel e-guides in the same community spirit.

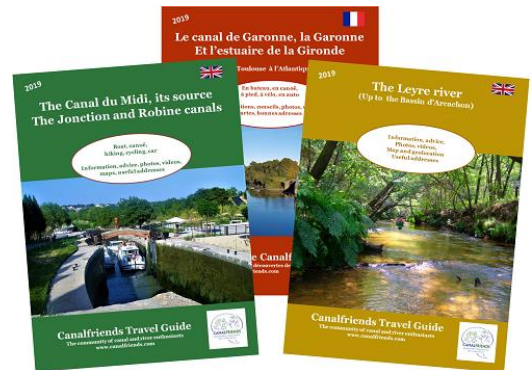
Special thanks to all the enthusiasts we met (hikers, cyclists, boaters), who gave us a better understanding of their expectations.

With thanks also to the professionals from both the private and local government sectors that are collaborating with us in greater numbers every year to develop our guides.

This new edition takes you from Toulouse to the Atlantic, beyond the Garonne canal and river, to the Gironde estuary.

Explore these regions on your own, with family or friends.

The guides provide information on waterways activities, accommodation, restaurants, local produce and events. For travellers with disabilities, the guides specify accommodation and activities providers able to cater to their needs. Your holiday will probably give you an appetite to return. Our [other free downloadable guides](#) are there to help you plan your next holiday.



Let us know what type of information you would like to find in this guide.

Recommend a site or activity.

Contact us with your comments, add your activity or accommodation.

Receive free updates.

[contact@canalfriends.com](mailto:contact@canalfriends.com)

See you soon

**Canalfriends Team**



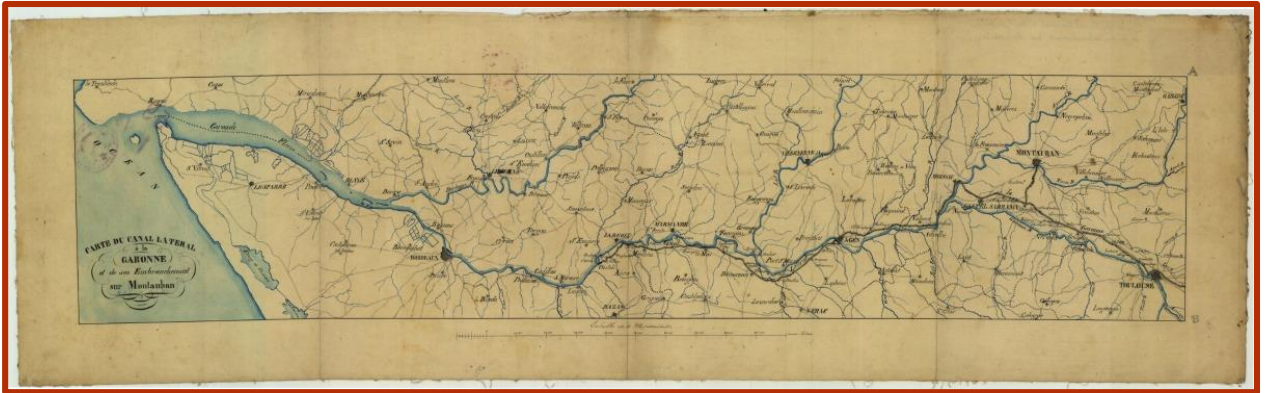
# Contents

Map: Garonne canal, Garonne river and Gironde estuary.....	p 4
The origins of the Garonne canal.....	p 5
Garonne canal - Key dates .....	p 7
The Garonne river.....	p 8
The Gironde estuary.....	p 9
The SMEAG.....	p10
Inland waterways transportation from the Atlantic to the Mediterranean.....	p 12
Fishing .....	p 13
Agricultural produce from the South-West.....	p 14
Explore the Garonne canal .....	p 15
1. Toulouse .....	p 16
2. Toulouse to Dieupentale.....	p 17
3. Dieupentale to Castelsarrasin .....	p 18
4. Moissac.....	p 19
5. St Jean de Thurac to Agen .....	p 20
6. Le Passage d’Agen to Buzet sur Baise.....	p 21
7. Villetton to Fontet .....	p 22
8. Bassanne to Castets-en-Dorthe .....	p 23
Explore the Garonne River and the Gironde Estuary from Toulouse to the Atlantic .....	p 24
1. Toulouse to Verdun sur Garonne .....	p 25
2. Verdun sur Garonne to Saint Nicolas de la Grave.....	p 26
3. Boudou to Passage d’Agen.....	p 27
4. Port Sainte Marie to Monheurt.....	p 28
5. Tonneins to Couthures sur Garonne.....	p 29
6. Hure to Saint Macaire .....	p 30
7. Saint Macaire to Bordeaux along the Garonne River.....	p 31
8. Saint Macaire to Bordeaux by bike on the roads.....	p 32
9. Bordeaux .....	p 33
10. Bordeaux Lamarque .....	p 35
11. Lamarque to Blaye .....	p 36
12. Blaye to Meschers.....	p 37
13. Saint Georges de Didonne to Royan.....	p 38
Map: Geolation from Toulouse to the Atlantic.....	p 39
A better experience for disabled passengers on our waterways.....	p 40
Guidelines.....	p 41
Locks of the Garonne canal .....	p 43
Services on the canal .....	p 44
Markets.....	p 45
Addresses: Activites and services.....	p 46
Addresses : Restaurants.....	p 53
Addresses : Accommodation & resources.....	p 55



# Map

In blue: the Garonne river & the Gironde estuary. In black: the Garonne canal



Crédits :Voies navigables de France, archives des canaux du Midi



As part of the [Eau Défis](#) event, Canalfriends participated in the 2018 edition of "Les 6 jours de Garonne": sailing to Bordeaux. From Toulouse (department 31) and Puy Lévêque (departement 46), a gathering of about a hundred enthusiasts on canoes, kayaks, sprinteau, small boats and miole. Organised by local people, every stage of the itinerary was full of fun and festivities. People shared tales of their passions for the river and tributaries. Visit the [6 jours de Garonne website](#).

In 2016, the Canalfriends community organised a discovery day of the Garonne canal between Agen and Sainte Colombe en Bruilhois. Watch [Skydric's Video](#)



# The origins of the Garonne Canal

The Garonne lateral canal, which became the Garonne canal in 2001, was built as an extension to the Canal du Midi, enabling the link between the Mediterranean and the Atlantic, hence the popular name the “Canal des 2 mers” (canal of the two Seas). In 1666, the Canal du Midi project from Sète to Toulouse aimed to connect the Mediterranean to the Atlantic via the Garonne river from Toulouse. In this way, the long and risky passage via the Gibraltar Straits could be avoided. ([See Canalfriends guide](#): The Canal du Midi, its source, the Jonction & Robine canals for further details).

However, navigating the Garonne was unpredictable, difficult and dangerous due to its varying water levels (high floods in spring, low water levels in summer), strong currents and shallow in places.

By 1753, there were already plans to connect the Canal du Midi to the Garonne river for easier navigation. From 1802, Montauban and Moissac began competing due to the economic stakes.

## Water supply system:

- Water intake from the Garonne to Toulouse via the Brienne canal
- Water intake from the Garonne to Pommevic, between Moissac and Valence d’Agen



With a larger population and greater industrial activity, Montauban lobbied to have the canal routed via the town before it joins the Tarn river and continues to the Garonne river.

However, in 1828, the project for a canal that would go beyond La Réole via Moissac was conferred to the Magendie company. Montauban, on the other hand, was to be connected to the Canal via a junction canal. Magendie eventually obtained the construction concession in 1832.

In return for the construction and maintenance, Magendie was to receive the boats rights of passage. Three years later, however, the company went bankrupt.

In 1838, the government took over the project, provided financing and entrusted its construction to Jean Baptiste Baudre, engineer of the Ponts et Chaussées.

The canal would run along the right bank of the Garonne from Toulouse to Agen and then on the left bank to Castets-en-Dorthe.

# The origins of the Garonne Canal



With the development of the railways, the State quickly lost interest in the canal and reduced its financing. The situation became critical: the Spanish workers who had been recruited as reinforcements were reduced to misery. Diseases started to spread from the stagnant waters in parts of the canal whilst water in other sections were made available for irrigation.

In 1846, the State once again began financing the project and work resumed.

In 1856, the canal was opened to navigation, almost two centuries after the Canal du Midi (1681) and at the same time as the Bordeaux / Sète railway line.

As early as 1852, the Midi Railways Company was granted the Canal du Midi and Garonne Canal concession. It obtained the lease for the Canal du Midi in 1858. From the outset, the railway was favoured with advantageous pricing structure.

The two canals, on the other hand, were excluded from the locks modernisation programme launched in 1879 by the minister Freycinet.

In 1898, the state took possession of both canals but the 1914 and 1945 wars prevented the modernisation programme from being carried out.

Then came the idea of building a "canal of the two seas" for the longer boats which was to in turn block the modernisation of the two existing canals.

In the 1970s, the project was abandoned and the Garonne canal locks were widened to create the Montech boat lift enabling the passage of motor boats. Today, the canal is used by boaters, enthusiasts and leisure tourism such as licence free boat hire, hotel boats and passenger boats.

In the 2000s, the creation of a greenway, using dykes and towpaths, greatly contributed to the development of cycling tourism.

Currently, there are initiatives to increase freight transport on the Garonne Canal and on the "Canal des 2 mers" generally.

## 4 branches:

- Brienne canal : water supply channel from the Garonne to Toulouse 1,573m
- Montech canal to Montauban 10,8km – 10 locks
- Descend the Tarn to Moissac : 136m – Double lock
- Descend the Baïse to Buzet /Baïse : 50m – 1 lock



## Key dates: Garonne canal

- 1666** : Royal edict for the canal du Midi's construction. The works commence with the creation of the port of Sète
- 1681** : Canal du Midi completed, filled and inaugurated in May
- 1823** : First railway line in France opened between Lyon and St Etienne
- 1828** : Feasibility study for the creation of the Garonne lateral canal
- 1832** : Construction concession granted to Magendie Compagny / A. Douin
- 1838** : Concession acquired by the State and construction entrusted to Jean Baptiste de Baudre
- 1839** : Construction of the Garonne lateral canal begins; 1st stone of Agen canal bridge laid by the Duke of Orléans
- 1841** : Decision to build the Bordeaux / Sète railway line. Work stops on the canal construction.
- 1845** : 1st stone laid for the Cacor canal bridge in Moissac
- 1846** : Work resumes following a ministerial decision
- 1847** : Agen and Cacor canal bridges completed
- 1852** : The Midi Railway Company led by the Pereire Brothers awarded the Canal du Midi concession
- 1856** : The Garonne lateral canal opens and is leased to the Midi railway company (Compagnie des chemins de fer du Midi)
- 1858** : The Canal du Midi is leased to the Midi Railway company which has the competence over the navigable waterways network from the Atlantic to the Mediterranean Sea
- 1879** : With the exception of the Garonne Canal, state managed French canals are adapted to Freycinet size (locks extended to 40m)
- 1898** : The state acquires the Canal du Midi and cancels contracts with the Compagnie des chemins de fer du Midi
- 1970/74** : Garonne canal locks are extended and the Montech Water slope is put into service until 2009
- 1991** : The Voies Navigables de France is established. This Organisation "VNF" manages the Garonne canal.



# The Garonne river



The source of the Garonne river is at Val d'Aran in the Spanish Pyrenees.

It flows 525km before reaching the Dordogne river with which it forms the Gironde estuary for 75km before flowing into the Atlantic Ocean.

Between Toulouse and Bordeaux, its water supply comes mainly from :

- From Tarn to Saint Nicolas de la Grave (82)
- From Gers to upstream at Agen (47)
- From Lot to Aiguillon (47)
- From la Baïse to Saint Léger (47)
- From Dropt to Caudrot (33)
- From Ciron to Barsac (33).

The tide goes as far as La Réole and the 'Mascarets' (strong waves during high tides) as far as Cadillac.

The Garonne river is volatile in nature and, until recently, rising waters in spring would result in historic floods several times a year.

Navigation can also be difficult.

For a century, from 1818 to 1918, steamers provided transport between Bordeaux and Langon, and then to Agen. In 1830, an Agen / Toulouse link was attempted but never got off the ground given the complexities.

The opening of the Garonne canal and in particular, the railway, sounded the steamships' death knell.

Today, you need a licence to navigate it.

Downstream, from Castets-en-Dorthe, there are cruises to the estuary.

Few sections remain accessible throughout the year.

However, there are a number of projects aimed at increasing activities on the river.

There are also canoe circuits available with professional hire companies. (cf address)

The Garonne river is part of the Natura 2000 network (European network of protected natural areas that aims to protect flora, birds and habitats).



# The Gironde estuary



The Gironde estuary is made up of two rivers, the Garonne and the Dordogne, with their confluence at the Bec Ambès. The Gironde has an area of 635 km<sup>2</sup>, is 75 km long and 12 km at its mouth.

Thanks to its maritime trade, the estuary has led to the growth of many towns such as Bordeaux (see following page).

Only ferry crossings are possible: upstream, from Lamarque to Blaye, downstream, from le Verdon to Royan.

The largest estuary in Western Europe, it's an exceptional natural environment for flora and fauna and it's not uncommon to spot migratory birds.

The silty waters has turned the estuary an ocre shade. On the left bank, in the Médoc, vine cultivation was preferred, hence the existence of numerous wine domains (chateaux).

There is a range of agricultural activities (wine, cognac, corn, ..) and very steep and impressive limestone-rock landscape on the right bank.

Several islands have formed and continue to evolve due to the Dordogne and Garonne tides, currents and alluvium, as well as from human intervention.

The île Nouvelle or the Grande île are a group of small islands.

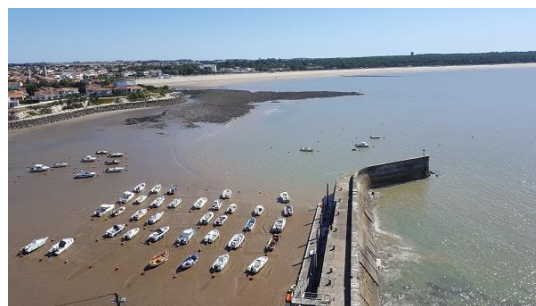
Designated protected zones, access to them is now forbidden. Only certain boat companies are authorised to organise supervised outings to certain islands (see boat companies details).

The estuary, a basin much loved for leisure activities and fishing, contains numerous small ports. Often located at the end of a river branch for protection from high tides, they are at times not very visible from the shore.

The large number of fishing cabins on the banks are now more convivial meeting places than for fishing. Their name "carrelets" is derived from the square shape of the nets.

Inland waterways tourism is booming, with cruise ships calling at Bordeaux, weekly cruises or boat trips providing the opportunity to explore the natural, historical, gastronomic and oenological heritage of these territories. (cf address).

The estuary is also the access point to the Canal of the two seas (Garonne Canal and Canal du Midi) thus connecting the Atlantic to the Mediterranean.



# The SMEAG

## A federation for the management and development of the Garonne

**The SMEAG plays an essential role in keeping the Garonne river's balance.**

The common will to share a policy to facilitate the valley's development led the two regions and four countries crossed by the Garonne river to unite and act together. Therefore, the SMEAG was born in 1983.

The SMEAG is responsible for setting up sustainable development plan for the Garonne basin, providing a sight of the bigger picture of the river, and putting in perspective its different states. Its mission is based on the assessment that it is essential to understand the overall nature on the river, from its source to the estuary, to base human activities while preserving the natural environment and adequately meeting public expectations.

**It relies on sharing resources according to the different uses through authorities solidarity.**

To assist its members and other stakeholders, the SMEAG's actions cover the entire river. It develops tools to ease the decision-making processes.



The SMEAG acts in the following areas :

- Water resource,
- Flood risk,
- Preserving and reclaiming aquatic environments,
- Enhancing natural and immaterial heritage by seizing the river and valuing the locals' memory.



# The SMEAG

## A federation for the management and development of the Garonne

The Garonne has its source in both Pyrenees and the foothills of the Massif Central. Its flow rate varies greatly depending on rain, snow, groundwater and melting glaciers. In the Pyrenees and Toulouse, low flows (low water) occur mainly in late Summer and Autumn while in Aquitaine this phenomenon comes about in mid August. The lower the water levels are, the harder it is to deal with sharing the water supply. Sustaining drinkable water, managing the requirements from both agriculture and industry while maintaining satisfactory conditions for the aquatic environment and developing recreational activities around the river represent challenging states.

### Our quality of life depends on the general condition of the river

The Garonne is a source of wealth for the growing populations that have settled on its banks. It links Val d'Aran to Toulouse and Bordeaux.

The South West of France would not be what it is without its landscapes carved by the natural heritage that the Garonne is.



For more information :



[www.smeag.fr](http://www.smeag.fr)

[www.lagaronne.fr](http://www.lagaronne.fr)



# Inland waterways transportation from the Atlantic to the Mediterranean

Before the arrival of the railway, the waterways were the main mode of transporting goods. Merging into maritime waterways, they facilitate trade with the outside world. Initially, nearly all the merchandise transported were of agricultural nature (plums, pastels, cereals, wines, draperies). Subsequently, manufactured goods such as building materials and hydrocarbons were also transported.

Until the creation of the Garonne Canal, boats arriving from the Canal du Midi had to sail the Garonne river. Several cities and villages developed along the river and its tributaries (Tarn, Lot, ..) and along the Garonne Canal: Bordeaux, Toulouse, Auvillar, Lamagistère, the Passage d'Agen, Tonneins, Cadillac, ..

Freight transport ceased in 1989 on the Canal du Midi and in 2000 on the Garonne Canal.

Today, as part of the ecological transition, companies are once again interested in this mode of transport. In 2016, VNF and the Nouvelle Aquitaine and Occitanie regions launched a feasibility study, the first results of which show significant potential.

In 2017, SAS L'Equipage transported a 100 ton transformer from Lyon to Port la Nouvelle.

On the Gironde estuary, industrial facilities have been installed on the right bank, with the Blaye nuclear power plant and the Bec d'Ambès oil refinery; on the left bank with the industrial port of Pauillac. These activities generate container and supertanker traffic.

The only barges that now go beyond Bordeaux to Langon are the ones transporting the A380 fuselage parts from Saint Nazaire.



River transport also reduces traffic in urban areas. Since 2016, in Bordeaux, the collection of waste from boats is done via river transportation in order to reduce road traffic.



# Fishing

**Fishing on the Garonne and the Gironde:** due to the tide, the downstream part of Castets-en-Dorthe to the estuary has a high density of white fish and predators. Fishing is possible from the banks. This river is suitable for anglers able to cope with the currents and outwit the predators with a well-chosen bait. This is an excellent playground for those wanting to fight with huge catfish or magnificent carps.

**Fishing on the Garonne:** a mecca for pole fishing with its abundance of white fish and predators.



## Fish species:

- **White Fish:** Bleak, Barb, Bream, Crucian, Carp, Chub, Stickleback, Roach, Gobio, Ruff, Rotengle, Tanche, Minnow, Dace,
- **Predators:** Black-bass, Pike, Perch, Pikeperch, Catfish
- **Migratory fish:** Allis shad, twait shad, eel, sturgeon, flounder, sea lamprey, salmon, sea trout.
- **Common species in the estuary:** Bar, burbina, merling, mullet, skate, sole
- **Invasive Species:** Catfish, Sunfish.

## Different fishing methods/techniques:

- **Flyfishing:** for lovers the aesthetics of the gesture
- **Lure fishing:** for predators, especially the catfish
- **Carp fishing:** for enthusiasts, day and night
- **Polefishing:** for beginners
- **Fishing gear and nets on the Garonne:** traditional fishing techniques: (Gironde), nets, traps.



**Regional federation regulations (period and type of fishing, size of fish where fishing permits may be purchased):**

The Gironde estuary up to the bec d'Ambès : **maritime sector rules and regulations:** [Affaires maritimes](#)

Beyond the bec d'Ambès on the Garonne River and Garonne Canal: **Inland waterways rules and regulations :**

Gironde : [www.peche33.com](http://www.peche33.com)

Haute-Garonne [www.fede-peche31.com](http://www.fede-peche31.com)

Lot-et-Garonne : [www.peche47.fr](http://www.peche47.fr)

Tarn-et-Garonne :

[www.federationpeche82.com](http://www.federationpeche82.com)

Fishing permits: : [www.cartedepeche.fr/](http://www.cartedepeche.fr/)



## Agricultural produce from the South-West Period may vary according to climatic conditions



From **April**: strawberries,  
asparagus

From **May**: cherries



From **June**: melons,  
tomatoes, zucchinis

From **July**: apricots,  
peaches, nectarines



From **August**: plums,  
apples, figs

From **September**: pears,  
hazelnuts, table grapes,  
harvest



From **October**: walnuts

From **November**: kiwi



You can also see tobacco dryers, typical of very  
prosperous cultivation in the 17th century..



# Explore the Garonne Canal

Toulouse to Castets-en-Dorthe



# 1. Toulouse



Arriving from the direction of the Canal du Midi and just before Toulouse, you can admire the range of boats at Ramonville. One of them, the Dionysus, was one of the last "Pinardiers" of the Canal des 2 Mers, which transported wine from Languedoc and Bordeaux to Toulouse until 1980. Like the barge, Le Tourmente, the Dionysus was designed to pass the canal des 2 mers locks, as, at 30 metres long, it's wider but smaller than the Freycinet boats [Video](#).

Then make a stop at St Sauveur Port in Toulouse and visit the busy city, steeped in history and charm. Located in the heart of town, close to all shops, the port is served by public transport. Its harbour office, an old warehouse, has been entirely restored and has a lovely view of the Canal du Midi.

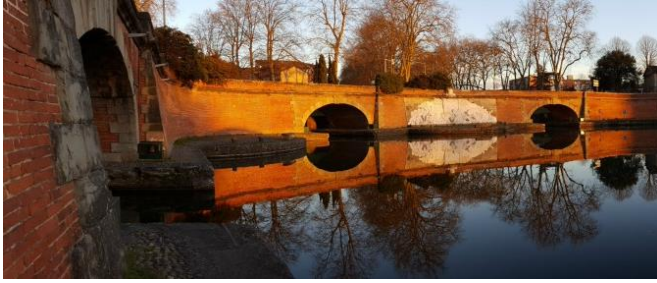


The port is an important stop for boaters of all nationalities. It's also a cycling stop with an "Accueil Vélo" accreditation. Since 2014, its quality services and environmentally friendly initiatives have led to it being awarded the Blue Flag "Pavillon Bleu". Head towards the city centre and the Saint Etienne cathedral where you will see a commemorative plaque on the Orleans pillar, reminding us that the Canal du Midi's creator, Pierre Paul Riquet, is buried here.

Three canals pass through Toulouse: Canal du Midi, Brienne canal and Garonne canal. Discover these canals on foot, cycling or boat. In summer, the green and calm waters, bordered by tree-lined avenues provide shade and pleasant cool sensation.



## 2. Toulouse to Dieupentale



The Canal du Midi starts at the former Garonne lock (PK0: kilometre point 0). In reality, the twin bridges (PK427m) span 3 canals (Canal du Midi, Brienne canal and Garonne canal).

The first two were built on the Royal canal and Brienne canal, during the creation of the latter in 1774. The 3rd bridge was erected in 1843, at the opening Garonne canal. Before the creation of this canal, boats from the Canal du Midi stopped at the Embouchure port to load their goods on flat-bottomed barges (Barques de Garonne) before passing the downstream lock (no longer exists) to continue on the Garonne river to Bordeaux.



Since the creation of the Garonne canal, boats can access the Garonne river at Castets-en-Dorthe via this canal. Then return to the twin bridges and start your journey on the Garonne canal, by boat, by bike on the Greenway or by car on the local roads.

Over the first kilometres, you will continue to hear the hustle and bustle of the city. Little by little, this will be replaced by the chirping of birds.

Until Bordeaux, you will come across wine appellations from the South-West (Frontonnais, Bruilhois, Buzet, Marmandais) and then, Bordeaux wine appellations from Castets-en-Dorthe onwards.

Take the time to take a break and discover the wealth of these territories.



### 3. Dieupentale to Castelsarrasin



At Dieupentale, the railway and the canal are in such proximity, it's hard to tell whether they are meant to complement or affront each other. When commercial activities were set up near the canal, for example, a little further along at the Montech paper factory, the station was used to transport raw materials that were then taken to Montech on the canal. The station is still in operation and, in 2017, a restaurant was opened there in an old house belonging to VNF. [Video: canal before Montech](#)

On reaching Montech, you will see an old paper mill's chimney on your left. In activity from 1861 to 1968, it used water from the canal with around 120 people working there. The goods arrived on a horse-drawn barge. The mill produced paper for newspapers including La Dépêche du Midi. On your right is the Montech canal with its 10 locks towards Montauban 10 km away.



Continuing along the Garonne canal, the old Montech water slope, built during the canal's upgrade to Freycinet norm, is on your right. Thanks to the water slope, the 5 locks that were too small to accommodate 30-40m boats did not need to be adapted. On an artificial channel, parallel to the canal, two heavy-duty self-propelled engines would push uphill while holding down a wedge of water containing the boat.

This slope made it possible to get across 13m30 and save 45 minutes. Commissioned in 1974, it was shut down in 2009 due to security concerns.

At Castelsarrasin, see the listed Saint Sauveur church's furnishings. Its 17th and 18th century woodwork is from the Cistercian Abbey of Belleperche. To get to the abbey, leave the canal shortly after Saint Porquier or at Castelsarrasin and continue for 5km, (access via departmental roads).



## 4. Moissac



When you arrive at Moissac, visit the magnificent Cacor canal bridge spanning the Tarn. Built between 1845 and 1847, it's over 356m long. Its deck is of Toulouse bricks and Quercy stones. Stop at the city centre canal port or on the Tarn in season. Take the opportunity to visit the city, listed City of Art, History & Grand Site Midi-Pyrénées, and its surroundings.

The Abbey Saint Pierre, founded more than 1000 years ago, is a masterpiece of Romanesque art. Its tympanum and cloister are on the UNESCO World Heritage List as part of the Way of St James route. The magnificent Atlas cedar has been declared a tree of exceptional value. The tympanum is lit up in colour once a week in summer. Moissac is also a major stop on the pilgrimage route.



In 1930, the city suffered terrible flooding due to an exceptional overflow of the Tarn. Numerous brick buildings collapsed and 6,000 people were left homeless. Following this, art deco architecture started to be built, for example, the Uvarium building near the Tarn, intended to be a spa based on the use of grapes. To enjoy the lovely city panorama, climb Saint-Laurent's hill behind the Abbey to the virgin's viewpoint.

In the 18<sup>th</sup> century, with the rise of the mining industry, the rich families built powerful mills on the banks of the Tarn as well as elegant mansions. It is now a paradise for predator fishing. The island of Beaucaire, an ornithological reserve listed Natura 2000, is designed for outdoor activities. There are numerous water activities.



You can discover these protected zones by bike and canoe. Thanks to Moissac's Chasselas grape, the city's most important activity is arboriculture. Find local produce (cherries, apricots, ...) Saturday and Sunday morning markets.

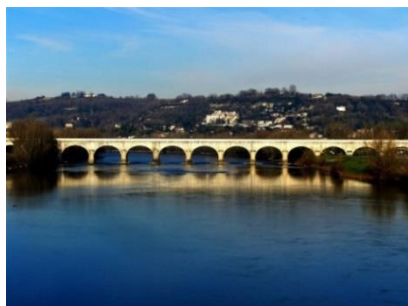


## 5. St Jean de Thurac to Agen



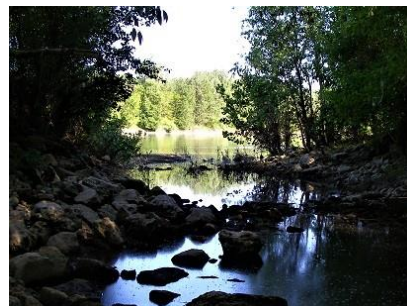
Before Agen, stop at Saint Jean de Thurac at the lock keeper's house now transformed into a restaurant and guest house. The Boë boating facilities stop is located a few kilometers away.

Continuing along Agen port you arrive at of the Garonne canal's main structures: the Agen canal bridge, restored in 2016, is 580m long and comprises 23 arches. It spans the Garonne river at a height of over 10 m. On August 25, 1839, the Duke of Orleans laid the first stone. One can imagine the commercial dynamism generated by its construction that took 8 years. Carts carried stones from surrounding villages; a real village was created on the banks [Video : passage of the Tourmente](#).



Cross the footbridge a few metres upstream to admire the canal bridge. In 1839, a first footbridge was built so that locals could attend the laying of the Agen canal bridge's first stone. It was restored in 2002. Looking upstream, notice the Beauguard dam, built in 1847 to feed the Garonne canal between Agen and Castets-en-Dorthe.

On the Garonne river's left bank, upstream of the dam, a 2.8 km channel used to flow under the Pierre bridge's first arch to the Passage lock. This water supply system needed regular maintenance because strong floods would erode the banks and damage the dikes. It stopped working in the early 1970s and was filled.

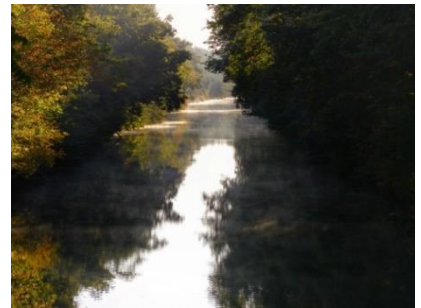


## 6. The Passage d'Agen to Buzet sur Baïse



In order to understand the original water supply system, leave the bridge on the Passage d'Agen side and turn back on the left following the green till the 2 lock keepers cottages at 20 & 22, rue Garonne. JM Catrou, enthusiast with a passion for his region, has converted one of the two houses into a museum in order to share his knowledge with visitors. There is the canalet (little channel) flowing from the dam that used to pass through the middle and into the Garonne canal at the Rosette lock: there remains a dead arm and a walled lock.

By boat, continue to the mooring stop at Sérignac sur Garonne. This is an area of dense vegetation. By bike, it's easy to see the variety of fruits cultivated along the canal (apples, kiwis ...)



Then cross the canal bridge over the Baïse. By bike and 500 metres after the bridge, you may continue to Vianne, a little village on the Baïse river, 5 km further along.

The lock enabling passage to the Baïse is in Buzet. You can continue along this river to Valence sur Baïse. However, since summer 2017, it is no longer possible to join the Garonne and Lot rivers.



## 7. Villeton to Fontet



Along the canal, enjoy the colourful landscapes that vary according to the sun and the seasons. In Villeton, take a break at a lock keeper's house now converted into a restaurant. Your next stop is Le Mas d'Agenais. Nestled at the top of a limestone terrace overlooking the Garonne valley and the canal. This village is one of the oldest in the area.

In the Middle Ages, it was surrounded by a wall with a door adjoining a small seigneurial castle that was destroyed in the 17<sup>th</sup> century. The beams from the castle may now be seen at the former wheat market, where a market is still held today on Thursday mornings. The collegiate church of Saint-Vincent is also worth a visit for its architecture and the richness of its furnishings. Until the beginning of the 19<sup>th</sup> century, the inhabitants could only cross the Garonne thanks to the services of a ferryman. A suspension toll bridge was built in 1840 and later upgraded to meet 20<sup>th</sup> century traffic requirements.



Built at the top of a 40-meter hillock, the village of Meilhan-sur-Garonne provides an extraordinary view over the Garonne valley and its meander. Due to its unique strategic position, this site was for a long time an impregnable fortress that left its mark on local history. However, conquered by the English, it was transformed into a citadel to guard the Aquitaine frontier. From the canal, proceed to the Tertre via a steep path known as the "breach of the English".



At Fontet, if cycling, you have the option of leaving the canal here and continuing to Bordeaux along the national greenway path "Le canal des 2 mers à vélo" (The canal of the 2 seas by bike). We offer guidance on how to rejoin this path further along, enabling you to continue to the end of the canal or even further along the Garonne to the village of Saint Macaire on the Garonne. Attention: these options take you along routes that are NOT cycle paths.



## 8. Bassane to Castet-en-Dorthe



Continuing on the canal, take a break at the Bassane Lock keeper's house at Lock 50. Just before lock 51 "Mazérac", on the left bank, you may go down the small road leading to the 11th century Saint Romain church.

Castets-en-Dorthe is the Garonne Canal's last port. You may hire a boat here in order to continue your journey. If you are a boat owner, pass the last lock and head for Bordeaux. The Garonne river can only be joined at high tide [Video](#). If necessary ask the port manager for information and also consult page 41.



On reaching the end of the canal, your gaze will be drawn to Hamel castle overhanging the Garonne. Built in the 14th century by Pope Clement V's nephew, it was remodelled in the 16th century. The good news is that its owners offer visits by appointment! (see addresses / heritage / Castets-en-Dorthe).

By bike, continue along the Garonne to Saint Macaire on the dirt track path on the other side of the bridge (see p27 & 29, geolocation map p31, details p33). Without changing banks, you can also take your bike aboard a hotel boat for a week of bike tours and discover the vineyards of Bordeaux and estuary rivers including the Gironde and Dordogne. (see addresses / cruises).



# Explore the Garonne River and the Gironde Estuary

From Toulouse to the Atlantic



# 1. Toulouse to Verdun sur Garonne



Its position in the heart of south-west France means Toulouse has always had an important role. Once capital of the Visigoths, now aeronautical and space capital; you can explore its two thousand years of history. Here a Romanesque basilica, there a discrete mansion with an imposing portal, further along, a converted industrial building, a facade with amazing terracotta decorations, the sound of a fountain, a hidden courtyard.

Wander through neighbourhoods that mix history and modernity. The Garonne crosses the city over a distance of 16.3 km. Its banks offer magnificent views of the Pont Neuf, the Hôtel Dieu St Jacques or the Grave dome. Admire them offshore on boat trips (cf address). In summer, enjoy the activities organised as part of Toulouse Plage festivities.



For the locals, Toulouse's banks have been animated spaces for a long time now. Recent developments by the city and Toulouse Métropole have enhanced the Garonne's attractiveness. Take the time to explore them. From the Espace Bazacle, la place de la Daurade to the Tounis quay, the river draws you into a dream scape. Further along, the Ile du Ramie, is a nautical activities base which is improved year by year via the "Grand Parc Garonne" development project.

This project aims to reclaim the 32km and 3000 hectares of Garonne that crosses 7 cities. Up to Verdun sur Garonne, there are paths: pedestrian-cycle loops and gardens in the Ginestous area, children's park, viewpoints, paths along the river and allotments in Gagnac-sur-Garonne. There are also canoe trips to help you discover these territories. (cf address).



## 2. Verdun sur Garonne to Saint Nicolas de la Grave



Verdun sur Garonne overlooks the Garonne river's left bank. In this ancient fortified city, river history enthusiasts, nearly all born beside waterways, are part of the Sprinteau club, designing nautical equipment (with or without engine) for sailing the Garonne.

Shortly after Verdun sur Garonne, on the left bank, the "island" of Labreille is classified a fragile natural zone. It is part of the Garonne's wetlands that's in perpetual evolution.

From Verdun sur Garonne to Saint Nicolas de La Grave, the river is vibrant, erodes the banks and overflows. It has strong currents and significant twists and turns. Because of this, it has rich alluvial wetlands that are testaments to the changes in the water bed. These spaces are natural environments of interest; in addition to their ecological role, they fulfil multiple functions that benefit us.



Established on the Garonne since 1143, the Abbey of Belleperche in Cordes Tolosannes was rebuilt on supporting walls in the 13th century and became one of the richest Cistercian monasteries. It was rebuilt again in the the 18<sup>th</sup> century. It is now a museum of the art of the table.

When you reach Saint Nicolas de la Grave, you will be at the Tarn and Garonne confluence. During torrential rains, the Tarn turns a reddish shade and so does the Garonne for several kilometres downstream [Video](#).



### 3. Boudou to Passage d'Agen



When leaving Moissac by car or by bike, you may leave the RD813 and go up to Boudou belvedere. This is a delightful viewpoint over the Tarn and Garonne 100 m below.

Further along on the opposite bank, the village of Auvillar also provides a bird's eye view of the Garonne. Take the opportunity to discover its magnificent circular hall and half-timbered houses. On the way back down, stop at the old port that used to be a hive of activity until the construction of the Garonne Canal. Caution: you cannot cross the Malause dam, built as part of the Golfech nuclear power plant.



Like many villages on the right bank, Lamagistère was a very important port in the 18th century. The latin origin of this name is ' the mistress', who used to collect the toll and managed the river traffic. The recently refitted docks beckons new activities.

At the gates of Agen, the Bauregard dam is also impassable. [Vidéo.](#) When river transport was a major activity here, the Agen Passage, situated on the left bank, was a sailors' village. Visit the old sailors cemetery at Monbusq 2 km away (continue along rue Garonne towards the bridge then rue Sacha Guitry). There are still 2 graves from that period. The one with a boat mounted on it is said to be of a shipyard master carpenter. The other, in the shape of an overturned yole with an anchor above it, is supposed to be of two sailors who died trying to rescue flood victims.



## 4. Porte Sainte Marie to Monheurt



You then arrive at Port Sainte Marie, a village built between a slope and the river. It's clear that the port enriched this merchant city in bygone days. Just as is the case at Agen, the sailors' village was located on the opposite site at Saint Laurent sur Garonne. In the 19th century, Port Sainte Marie was doubly impacted by the arrival of the railway that crossed the village and reduced the river trade.

At Saint Léger, on the left bank, the river Baise flows into the Garonne. Until 2017, a local authority towboat made it possible to pass the lock and join the Lot river via the Garonne, and a channel led to the Lot from Aiguillon. It's no longer possible to rejoin the Lot by boat.



For a view of the Lot and the Garonne confluence, cross the Lot on the RD813 towards Nicole. On entering the village, turn right onto a small road leading to Pech de Berre located 170m above sea level. A little further along, on the left bank, at the time when Gabarres and paddle boats criss-crossed the Garonne, Monheurt was a fishing village and a port.

Today, the locals' enthusiasm for their river and the presence of a slipway makes Monheurt an essential location for nautical events. It is also a starting point for the Tonneins club's summer canoe trips. A ferry used to enable crossing to the banks of Ayet opposite thus linking Guyenne to Gascony. Another ferry upstream at Montluc hamlet would continue to Aiguillon.



## 5. Tonneins to Couthures sur Garonne



Just before Tonneins, the Roches de Reculay site, consisting of a natural rocky formation listed category 3. A bypass was created to enable navigation. Contact Club Tonneins for further details on this crossing.

Tonneins was closely tied to hemp and tobacco cultivation for more than two centuries. In 1721, a factory was built here, followed by a second in 1875, later occupied by the SEITA (former French state-owned tobacco monopoly). The end of the monopoly and competition from "blond tobacco" led to its closure in 2000. Stroll along the quays overlooking the Garonne from a vantage point of about twenty metres, flanked by the old state tobacco factory and the old lavoir. Cross over to the other side via the early 20<sup>th</sup> century bridge.



Originally a simple castle protecting navigation on the Garonne, Marmande was founded by Richard Coeur de Lion (lion heart) in 1182. Visit its church, Notre-Dame, listed as a Historic Monument. Its cloister was built in 1540 and the garden is listed as an exceptional garden. Marmande is also famous for its festivals: Garorock in June with more than 80,000 festival goers, then in August, the Lyrics Nights in Marmande. Finally, for those wanting to cool off in the Garonne, a supervised bathing area is available in the heart of the Filhole plain.

Couthures-sur-Garonne village still lives to the rhythm of the Garonne. Originally, it consisted mainly of wooden houses that moved with the floods and riverbed changes. Agriculture, fishing and logging were the main activities. The river still commands total respect from the village inhabitants. Find out more about its history at the Maison des Gens de Garonne. In July, the village will host the "Ateliers de Couthures", an international festival of living journalism.



## 6. Hure to Saint Macaire



Hure, on the left bank is a Canoë arrival base. They run circuits on the upstream section from Tonneins (cf address) [Video](#). On the right bank, the inhabitants of Bourdelles are truly passionate about the Garonne. They undertake regular maintenance of their dock and know how to organise impressive fetes when nautical events are passing by. In the past, a ferry provided the link between the two villages.

Continue to the foot of La Réole, founded in 977 and located on the right bank. Providing a splendid viewpoint over the Garonne, La Réole developed around its Benedictine priory.



Saint Macaire is a village perched on a rock. In the 12<sup>th</sup> century, it was a hub for traders and merchants due to its proximity to the Garonne. It's a delight to stroll through its narrow streets. In order to reduce the width of the river, the port had to be moved over time

In the 19<sup>th</sup> century, its third port on the Tivoli quay was used to ship stones extracted from the base of the rock, on which the village stands, to Bordeaux. They went as far as to dismantle parts of the ramparts and dungeon until this quarrying was banned in 1876. In recent years, members of the Association Port Nava'l have been trying to revive this port by showcasing its quays and hold.



## 7. Saint Macaire to Bordeaux along the Garonne river



From Langon, you may come across the Airbus barges. As you get nearer to Bordeaux, the tidal effects are stronger. Note the 'carrelet' (square fishing nets, lowered by means of a winch) along the banks. Then you pass by Cadillac, a bastide town founded in 1280.

The volunteers of the La Cale association in Lestiac are restoring an old hold and undertake regular maintenance to prevent the mud from regaining the upper hand. The association organises events every year and actively participates in waterways activities. Immediately after, on the right bank, is the magnificent medieval castle of Langoiran which was a royal fortress in the 15th century.



Meet the people who work to preserve the history and customs of this territory that is turned resolutely towards the river. The Chantiers Tramasset continue the tradition of wooden boat construction. Surfing, paddle, canoe and kayak enthusiasts eagerly await the Mascaret wave that arrives with the high tides.

This Mascaret is visible as far away as Cadillac. In Tabanac, climb to higher ground to observe the Garonne during sunset on a day the tide brings in this impressive wave.



## 8. Saint Macaire to Bordeaux by bike on the roads



Cycling to Bordeaux from Saint Macaire, you need to leave the flat cycle path and gain height by using roads shared with cars. It will be worth it for the magnificent view of vineyards and forests landscape. (Find the link to this route on the google maps on page 31).

After about 25 km on the D19 and D 227 roads and just past the village of Vincène, rejoin the Roger Lapébie cycle path. It's a former railway line and has gentler slopes.



You find yourself in a much quieter and safer environment, where you can take a well-deserved break after the heights climbed. As you approach Bordeaux, you will travel through a tunnel that seems extremely sombre though it is lit up when you enter it. You will then cross old train stations converted into a restaurant and other services.

From Latresnes, you descend to the Garonne as you continue towards Bordeaux. Due to development works underway (construction of the Arena, to be followed by Simone Veil bridge ...), the route layout may change. Then cross the landscaped green spaces that will make you forget the recent discomforts of the route. At the Pont de Pierre (Bridge), either go across and head for the town centre or railway station, or stay on the same bank for the lovely panoramic view of the city.



## 9. Bordeaux



It is only over the last twenty years that Bordeaux has reclaimed its docks, thanks to quality facilities, giving priority to pedestrians, cyclists and trams. To understand Bordeaux's economic growth thanks to the Garonne, nothing better than to stroll down "Port de la lune" listed World Heritage site by Unesco. Along the quays, cross the Garonne at the Jacques Chaban-Delmas bridge, you can see the splendour of Bordeaux and return via Pierre's bridge (le pont de Pierre, approx 7 km).

Avoid fatigue by visiting the quay on a tram and admire the beautiful 18th century facades. At that time Bordeaux port, situated where the fountain the 'miroir d'eau' is today, was an important transit point for goods coming from the Garonne, the Garonne canal or the Atlantic. In the Chartrons district (towards the J. Chaban-Delmas bridge), the merchants used to store their barrels in the cellars located on the ground floor. Some of the buildings still have the rails on which the barrels were rolled.



Treat yourself to boat trips to admire Bordeaux from the Garonne. Boats offer trips with or without dining / access to the Cité du Vin. Week long cruises take you on a tour of the wine-growing territories on the Garonne, the Dordogne and the Gironde estuary (cf address).

Also take the time to stroll through the streets of Bordeaux and see its Grand Theatre designed by Victor Louis and inaugurated in 1780; This is one of the most beautiful 18th century theatres.

From 14 July to 18 August 2019, visit the docks for the "Dansons sur les quais" festival. It's free for everyone! (cf address).



## 9. Bordeaux



The Jacques Chaban Delmas bridge is 575 metres long with 433 metres of main deck. Its lifting span of 117 meters helps to preserve maritime and river traffic as well as other waterways activities. The pylons change colour according to the tide: blue when it is high and green at low tide.

The Bat<sup>3</sup> shuttles designed by a Gironde company, are two hybrid shuttles are an integral part of Bordeaux's transport network, providing a shuttle service from one bank to the other via 4 pontoons stops: Lormont, Cité du Vin, the Hangars, Jean Jaurès and Stalingrad. The Hirondelle and the Gondole both accommodate 45 passengers and 6 bicycles.



Popular festival with a programme rich in nautical and artistic events on both banks of the Garonne. It is biennial and held at the end of spring : a prestigious stopover featuring tall and other types of ships, boat trips, exhibitions, world music concerts, picnics and fireworks on the river Garonne.

Held every two years, alternating with Bordeaux's Fête le Fleuve (River Festival), usually around the summer solstice.

The 2018 edition, which marked the 20th anniversary of the event's creation, will be remembered as a historic success, thanks in large part to the presence of the thirty or so tall ships moored along the quays for the arrival of the Tall Ships Regatta: The Three Festivals.



## 10. Bordeaux to Lamarque



Between Bordeaux and Lamarque in the Medoc, there is no cycle lane beside the river. On the left bank, at hangar 14, leave the quays and take the Médoc route. Follow the canal des 2 mers cycle path directions for about 47 km. This circuit is geolocated on the Canalfriends map, accessible via the link on page 39.

Sail under the Chaban Delmas bridge that has an 11m draught at high tide and is only raised for ocean liners, tall ships and on special occasions. The large boats either have to lower masts or sail through when the bridge is raised.



After the bridge, all boats can sail from this point onwards. You will come across small boats belonging to enthusiasts, those offering short boat trips, cruises or container ships.

The tip of the Bec d'Ambès is located on the right bank just after the oil refinery. You are now at the confluence with the Dordogne river and can continue to the Gironde estuary.



## 11. Lamarque to Blaye



If cycling, on reaching the river at Lamarque, take the ferry to Blaye on the opposite bank. On this crossing, there's a beautiful view of the "verrou de l'estuaire" designed by Vauban at the request of Louis XIV to protect Bordeaux. It consists of Fort Médoc on the left bank, Ile Paté and the citadel of Blaye on the right bank.

Fort Médoc, built to prevent the passage of boats between the island and Cussac in Medoc, has never had the opportunity to prove its effectiveness. Decommissioned in 1916, it belongs to the local authority.

On the island of the same name, the oval shaped Fort Paté enabled a 360 ° look out. Today, it's private property and docking is not possible there.



Situated on the right bank overlooking the estuary, Blaye's strategic position has always been coveted.

Its fortifications have evolved over the years. In the 17th century, Vauban transformed it into a fortress. The citadel is still in exceptional condition.

Cycling out of Blaye, continue for a few kilometres away from the Gironde using cycle lanes and roads. As the estuary attracts migratory birds, you will start to see and hear them in greater numbers.



## 12. Blaye to Meschers



Explore the small ports by boat or bike. Some of the ports were once prosperous; most now cater for leisure pastimes. By boat or bike, discover the small ports. Some have had a prosperous time; most are now haunts for enthusiasts.

For many years, the marina in Mortagne sur Gironde was the 3<sup>rd</sup> largest after Bordeaux and Blaye. This village is a small haven of tranquility; continue along the pedestrian path near the shipyard goes through corn fields and reed beds to the Gironde shores. Depending on the season, you will see and hear many marsh and migratory birds.



Then stroll through the narrow streets of Talmont sur Gironde. Situated on a rocky promontory overlooking the estuary, the village was built in the 13th century on the plans of the medieval forts. Its streets are at right angles. The Sainte Radegonde church is a stop on the Way of St James. From the port, before entering the village, there is a magnificent viewpoint of the Caillaud cliffs.

A little more effort is needed at Merschers sur Gironde before you can stroll along the beaches. On reaching the limestone cliffs, enjoy the breathtaking view of the estuary. Visit the Regulus troglodyte caves that once provided shelter.



## 13. Saint Georges de Didonne to Royan



You are now almost at the end of your journey; enticed by the sandy beaches? It's time to enjoy the water ... take your time ... after all, this is "slow tourism"!

If sailing, you can probably stop at Port Saint Georges de Didonne at high tide. This was a very popular fishing port in the 18th and 20th century and is now a small marina.



For a panoramic view at 36m over the estuary, climb the 144 Vallières lighthouse step.

As far back as 1860, the lighthouse once guided passage into the Gironde. It was partially rebuilt after the war but there are still traces of shells on it. Decommissioned in 1969, it is now open to the public.

You have arrived in Royan. Some make the return journey by train or on the ferry connecting to the Verdon on the other side. Others continue cycling along the Atlantic cycle paths (Vélodyssée) northwards / Norway or southwards / Portugal on the ferry. And those who sail will see the Cordouan lighthouse. Feel free to share your impressions with us..



# Map and geolocation

Click [HERE](#) to access the interactive map \*

Select for geolocation:

- Routes / itinerary
- The canal locks
- Ports & services on the canal
- The holds, ports and difficulties on the Garonne (from Toulouse) and the estuary of the Gironde
- Activities, restaurants and accommodation
- Heritage sites
- Disabled-Friendly providers: accredited "Tourisme & Handicap" & PMR Friendly

Find the addresses in the second part of the guide



(\*) : you may have to download Google Maps



# A better experience for disabled passengers on our waterways

To facilitate experiences that make a trip unforgettable, Canalfriends is working to promote the use of our waterways by members of the public with disabilities.

This project was conceived in 2018 with Fabienne, Kim and Thierry who are passionate road and small route hikers, using motorized equipment (3 wheel disabled bike or electric all terrain wheelchair).

From 2019, Canalfriends will help identify suitable facilities and providers:

- "Accreditation Tourisme & Handicap" : accreditation tourism & Disability, for one or more disabilities: auditory, mental, motor, visual;
- "PMR Friendly": facilities accessible to people with reduced mobility. The amenities are specified in the adverts so that users can determine how suitable they are for their own needs.





Canalfriends.com features an accommodation and activities category "Disability Friendly Tourism" (Tourisme & Handicap and PMR Friendly), which makes it easy to identify establishments and providers.

The adverts contain information on the disability concerned as well as degree of accessibility.

The addresses in the downloadable guides indicate the providers that are disability friendly. Click the advert's title to access the provider's information.

The geolocation map on page 39 of the also includes a category "Tourisme & Handicap and PMR Friendly". Establishments that are:

-  Accredited Tourisme & Handicap
-  PMR Friendly

## For further details on:

- The origins of the Disability Friendly project, Click [HERE](#)
- Tourism and Disability Accreditation: [HERE](#)



# Guidelines

Produced in association with VNF as well as the associations and professionals featured in the guide. They are at your disposal should you require further information.

## On the Garonne canal:

- The locks are numbered from Toulouse.
- Find the list of these locks and their distances from Toulouse p43
- Services p44.

## Navigation on the Garonne canal:

- Boat trips on the Garonne in Toulouse and on the Tarn in Moissac, as well as cruises on the canal (cf address)
- Licence free boats to hire for sailing the Garonne Canal (cf address)
- The locks are automatic, closed at lunch time, in the evening (hours depending on the season) and some holidays (May 1).

## Further information:

- [The essential guide for boaters](#)
- [Rules and regulations](#)

## Navigation on the Garonne river and the Gironde estuary:

Daily boat trips and cruises lasting several days are available on the Garonne and the Gironde Estuary (cf address).

A boat licence is required to navigate the Garonne and the Gironde estuary. Permit free hire boats are not authorised.

The Garonne and the estuary are more suited to canoes than the canal as you would need to leave the water at each lock. Rental companies offer a range of itineraries (cf address).

If travelling alone, ask the professionals about any difficulties you are likely to encounter. Examples: :

- Bauzelle Passage should be navigated on the right (equivalent category 3 in kayak on the left)
- Malause Dam
- Beaugard Dam at Agen
- Passage des Roches at Tonneins (category 3)
- Tide phenomenon felt up to La Réole
- Pont de Pierre passage in Bordeaux (category 3 equivalent)
- Maritime area starts in Bordeaux

## [Docks, ports, bridges and difficulties on the Garonne \(Toulouse\) and the Gironde estuary.](#)

Warning: these details may vary due to tides, floods, lack of maintenance. The Canalfriends team cannot be held responsible for these changes. Check this information before you leave.



# Guidelines

Produced in association with VNF as well as the associations and professionals featured in the guide. They are at your disposal should you require further information.

## Cycling:

Between Toulouse and Castets-en-Dorthe, you are on the greenway cycle path of the canal des 2 mers.

To get to Bordeaux, take the Roger Labépie cycle path with 2 options, each have shared lanes:

- the classic route is the “canal des 2 mers à velo” route which involves leaving the canal at Fontet (6km before Castets-en-Dorthe) direction La Réole and getting back on to the Roger Labépie path (signposted) at Sauveterre de Guyenne. (Light green on the google maps linked to on p39)
- Alternatively, follow the Garonne river along small paths (which can be muddy) to Saint Macaire. You will then have to go back north to get back on to the Roger Labépie path (black line on the google maps linked to on p 39).

From Bordeaux to Lamarque, go inland to Lamarque and take the ferry across the estuary.

Between Blaye and Royan, there are cycle paths and roads.

From Mortagne sur Gironde, the terrain becomes less flat.

Carry a puncture repair kit, water, first aide for sores and mosquitoes as well as the Canalfriends guide!

Temperatures can be high in summer, wear protective gear (cream, suitable clothing, cap/hat) and adjust your travel times especially if travelling with children.

## By car, motorhomes and motorbikes:

You can visit all the places featured in this guide, but bear in mind that motorised vehicles are not permitted on the canal greenway paths.

## Good practices:

- In the countryside, be sure to minimise your footprint and not cause any damage to the surrounding nature;
- Do not leave litter anywhere (countryside, towns or villages) pavements, drains etc. All litter/waste will end up in the rivers, then in the oceans;
- Take a bag with you to bring back your waste;
- Do not light fires;
- Do not make too much noise; please respect wildlife and other users.



# Locks of the Garonne canal

N° / Name / City / km
Ecluse de descente en Garonne /Toulouse / 0 km
Pont-Jumeaux / Toulouse / 0,5 km
1. Lalande / Toulouse / 4,42 km
2. Lacourtenourt / Fenouillet / 7 km
3. Fenouillet /Fenouillet / 8,1 km
4. Lespinasse / Lespinasse / 12 km
5. Bordeneuve / Lespinasse / 13,8 km
6. Saint-Jory / Saint-Jory / 15,7 km
7. L'Hers / Castelnau-d'Estrétefonds / 19 km
8. Castelnau / Castelnau-d'Estrétefonds /19,9 km
9. Embalens / Castelnau- d'Estrétefonds / 23 km
10. Lavache / Montech / 41,5 km
11. Montech / Montech / 43,6 km
Pente d'eau de Montech / Montech / 44,4 km
12. Peyrets / Montech /44, 4 km
13. Pellaborie / Montech / 44,8 km
14. Escudiés / Montech / 45,2 km
15. Pommiés / Montech / 45,8 km
16. Escatalens / Escatalens / 48 km
17. St-Martin / Castelsarrasin / 52,5 km
18. Prades / Castelsarrasin / 55,9 km
19. Castelsarrasin / Castelsarrasin / 58,3 km
20. St-Jean-des-Vignes / Castelsarrasin / 60 km
21. Verriès / Castelsarrasin / 60 km
22. Artel / Castelsarrasin / 60,5 km
Pont-canal du Cacor sur le Tarn / Moissac / 62 km
23. Cacor / Moissac / 63,2 km
24. Grégonne / Moissac / 63,8 km
25. Moissac / Moissac / 64,4 km
Ecluse de descente en Tarn / Moissac / 64,4 km
26. Espagnette / Moissac / 68 km
27. Petit Bézy /Boudou / 71,8 km

N° / Name/ City /km
28. Braguel / Pommevic / 77,5 km
29. Pommevic / Pommevic / 79,1 km
30. Valence / Valence-d'Agen/ 80,9 km
Pont-canal sur la Barguelonne / Lamagistère / 85,3 km
31. Lamagistère / Lamagistère / 87,3 km
32. Le Noble / St-Jean-de-Thurac /94,2 km
33. St-Christophe / St-Jean-de-Thurac /97,3 km
Pont-canal sur la Séoune / Lafox / 99,4 km
Pont-canal d'Agen sur la Garonne / Agen / 108,6 km
34. Agen / Le Passage / 109,9 km
35. Marianne / Le Passage / 110,3 km
36. Chabrières / Le Passage / 110,7 km
37. Rosette / Le Passage / 111,1 km
38. l'Auvignon / Bruch / 125,6 km
Pont-canal sur la Baïse / Vianne / 132,1 km
39. Baïse / Vianne / 132,7 km
40. Larderet / Vianne /132,9 km
Ecluse de descente en Baïse /Buzet-sur-Baïse / 135,2 km
41. Berry / Buzet-sur-Baïse / 143 km
42. La Gaule / Puch-d'Agenais / 147,7 km
43. La Gaulette / Villeton / 150,4 km
44. Mas / Villeton / 156 km
Pont-canal sur l'Avance / Le Mas d'Agenais / 165,3 km
45. L'Avance / Le Mas d'Agenais / 165,9 km
46. Bernès /Montpouillan / 171 km
47. Gravières /Meilhan-sur-Garonne / 173,5 km
48. L'Auriole /Hure / 181 km
49. Fontet / Fontet /183,6 km
50. Pont de Bassanne / Bassanne / 187,7 km
51. Mazerac / Castets-en-Dorthe / 192,1 km
52. Les Gares / Castets-en-Dorthe / 192,9 km
53. Castets / Castets-en-Dorthe / 193,4 km



## Services on the Garonne canal

City	
Toulouse Port St Sauveur	Rings, electricity, water, discharge station, water recycling / bilge, bins, fuel, port office, internet access, shower, laundry, ramp, 24-hour sanitary access, bike facilities
Dieupentale	Rings, bins
Montech	Rings, electricity, water, bins, port office, internet, WC, shower, laundry, ramp
Saint Porquier	Rings, bins
Castelsarrasin	Rings, electricity, water, water recycling / bilge, bins, port office, internet, WC, shower, laundry, ramp, water fountain
Moissac	Rings, electricity, water, discharge station, bins, fuel, port office, internet, WC, shower, laundry, water fountain
Malause	Rings, electricity, water, bins
Pommevic	Rings, electricity, water
Valence d'Agen	Rings, electricity, water, bins, port office, internet, WC, shower, laundry, ramp
Golfech	Rings, electricity, water
Boé	Rings, electricity, water, bins, port office, WC, shower, ramp, water fountain
Agen (Locaboat)	Rings, electricity, water, bins, fuel, port office, internet, WC, shower
Le passage d'Agen	Water fountain
Sérignac sur Garonne	Rings, electricity, water, bins
Damazan	Rings, electricity, water, bins
Buzet sur Baïse (Aquitaine Navigation)	Rings, electricity, water, discharge station, water recycling / bilge, bins, port office, internet, shower, washing machine, dryer, ramp
Buzet sur Baïse (Halte nautique)	Rings, electricity, water, bins, port office, internet, WC, shower, laundry
Villeton	Rings, electricity, water, bins, WC, shower
Lagruère	Rings, bins, WC, shower, laundry
Le Mas d'Agenais	Rings, electricity, water, discharge station, bins, WC, shower
Le Mas d'Agenais (le Boat)	Rings, electricity, water, water recycling / bilge, bins, fuel, internet, WC, shower, ramp
Caumont sur Garonne	Rings, water, electricity, WC
Fourques sur Garonne	Rings, electricity, water, water recycling / bilge, bins, port office, internet, WC, shower, ramp
Meilhan sur Garonne	Rings, electricity, water, bins, port office, internet, WC, shower, laundry
Fontet	Rings, electricity, water, bins, port office, internet, WC, shower, ramp
Bessanne	water fountain
Castets-en-Dorthe	Rings, electricity, water, discharge station, water recycling / bilge, bins, fuel, port office, internet, WC, shower, laundry, ramp

(\*): « Water » = boats bollards, « water fountain » = free water point for walkers





# Markets



City	Date & location
Toulouse (31)	Tuesday morning : Square Charles de Gaulle /capitole – Organic market Sunday morning : marché de Saint Aubin – place Saint Aubin Tuesday to Sunday - morning : marché Cristal – Bld de Strasbourg Tuesday to Sunday – matin : marché Victor Hugo – Place V. Hugo
Grenade/Garonne (82)	Saturday morning : town centre
Castelsarrasin (82)	Thursday morning: town centre
Moissac (82)	Saturday & Sunday morning : place des Récollets
Valence d’Agen (82)	Tuesday morning
Lamagistère (82)	Sunday morning
Agen (47)	Saturday morning : avenue du Général de Gaulle – Farmers market Saturday morning : place des Laitiers – Organic produce
Le Passage d’Agen (47)	Wednesday & Saturday morning : avenue de la Marne /Le Chat d’Oc
Tonneins (47)	Wednesday & Saturday morning
Le Mas d’Agenais (47)	Thursday morning : traditional market
Marmande (47)	Tuesday - Saturday : Under la halle – traditional market Saturday morning : market square Thursday evening in July & August : local produce
Meilhan sur Garonne (47)	Wednesday evening in July and August : Local produce (Dine + market ) 7 - 11 pm – place d’Armes
La Réole (33)	Saturday morning : Esplanade des quais
Langon (33)	Friday morning : Banks of the Garonne
Cadillac (33)	Saturday morning : village centre
Bordeaux (33)	Thursday (organic) & Sunday morning : quais des Chartons Tuesday - Sunday : marché des capucins – place des capucins
Margaux (33)	Wednesday morning: parking de la salle des fêtes
Moulis en Médoc (33)	Wednesday morning : place de l’Eglise
Blaye (33)	Wednesday & Saturday morning : allée des soupirs
Saint Ciers sur Gironde (33)	Wednesday, Friday & Sunday morning : place du 8 mai
Saint Georges de Didonne (17)	Every morning (Mondays only in season) : centre ville
Royan (17)	Every morning (Mondays only in season) : Boulevard Briand



# Activities

## Boat: cruise

### Garonne /Gironde/Dordogne Bordeaux & Castets en Dorthe



[Wine/cycling or golfing  
cruise from 1 to 8 days](#)

24, quai Deschamps  
33100 Bordeaux  
T : +33 (0)6 16 98 12 66  
[contact@aquitaine-cruises.com](mailto:contact@aquitaine-cruises.com)  
[Website](#)

### Garonne /Gironde/Dordogne Bordeaux



[CroisiEurope](#)

PMR Friendly  
Boarding in front of the 33  
quai des Chartrons  
33000 Bordeaux  
US calls : 1-800 768 7232  
UK calls : 0208 328 1281  
[info-us@croisieurope.com](mailto:info-us@croisieurope.com)  
[Website](#)

### Garonne/Gironde/Dordogne Bordeaux



[Barge Tango](#)

Croisières  
quai de Queyries  
33100 Bordeaux  
T : 33 (0)6 08 25 46 00  
[info@canalsoffrance.com](mailto:info@canalsoffrance.com)  
[Website](#)

## Boat: boat trip

### Canal de Garonne & de Montech Montauban



[Le Rosa](#)

Port Canal  
82000 Montauban  
tél : +33 (0)6 32 32 42 49  
[contact@rivesdusud.com](mailto:contact@rivesdusud.com)  
[Website](#)

### Haute-Garonne Toulouse



[Les Bateaux Toulousains](#)

108, av Raymond Naves  
31500 Toulouse  
T : +33 (0)5 61 80 22 26  
[contact@bateauxtoulousains.com](mailto:contact@bateauxtoulousains.com)  
[Website](#)

### Haute-Garonne Toulouse



[L'Occitania](#)

-10% : code Canalfriends  
Face au 4 Bld Bonrepos  
31000 Toulouse  
T : +33 (0)5 61 257 257  
[infos@toulouse-croisieres.com](mailto:infos@toulouse-croisieres.com)  
[Website](#)

### Gironde Bordeaux



[Bordeaux River Cruise](#)

PMR Friendly  
24, quai des Chartrons  
33000 Bordeaux  
T : +33 (0)5 56 39 27 66  
[contact@bordeaux-river-cruise.com](mailto:contact@bordeaux-river-cruise.com)  
[Website](#)

### Gironde Bordeaux



[Lunch cruise in bordeaux](#)

24, quai Deschamps  
33100 Bordeaux  
T : +33 (0)6 16 98 12 66  
[contact@aquitaine-cruises.com](mailto:contact@aquitaine-cruises.com)  
[Website](#)

### Gironde Bordeaux



[Marco Polo](#)

embarcadère Montesquieu -  
face au 33 quai de Queyries  
33 100 Bordeaux Bastide  
Tél : +33 (0)6 07 22 34 29  
[contact@marcopolo-bordeaux.com](mailto:contact@marcopolo-bordeaux.com)  
[Website](#)



# Activities

## Boat: boat trip

### Garonne

Saint-Genès-de-Blaye



#### [Cœur d'Estuaire](#)

13 bis Ségonzac  
33390 Saint Genès de Blaye  
T: +33 (0)6 12 65 32 23  
coeurdestuaire.33@orange.fr

[Website](#)

### Lot-et-Garonne

Couthures-sur-Garonne



#### [Boat trip on the Garonne](#)

47180 Couthures sur Garonne  
T : +33 (0)5 53 64 44 44  
info@valdegaronne.com

[Website](#)

### Tarn-et-Garonne

Moissac



#### [Moissac by boat](#)

Quai harles de Gaulle  
82200 Moissac

T : +33 (0)6 50 50 52 10

contact@moissac-en-bateau.fr

[Website](#)

## Boat: hire boat

### Lot-et-Garonne

Agen



#### [Locaboat Holidays](#)

Quai de Dunkerque  
47000 Agen  
T : +33 (0)3 86 91 72 72  
info@locaboat.com

[Website](#)

### Lot-et-Garonne

Buzet-sur-Baïse



#### [Aquitaine Navigation](#)

Port de Buzet-Val d'Albret  
47160 Buzet sur Baïse  
T : +33 (0)5 53 84 72 50  
contact@aquitaine-navigation.com

[Website](#)

### Waterways



#### [Information & advice](#)

to help you find a rental  
boat to suit your needs

T : +33 (0)5 53 96 72 50

contact@canalfriends.com

[Website](#)

## Boat: port & marina /other services

### Charentes Maritimes

Mortagne sur Gironde



#### [Les Pieds au Sec](#)

Chantier naval & port à sec  
40 quai de l'Estuaire  
17120 Mortagne-sur-Gironde  
T: +33 (0)6 64 15 37 96  
yann.trezeguet@free.fr

[Website](#)

### Haute-Garonne

Toulouse



#### [Port Saint Sauveur](#)

PMR Friendly  
7 Port Saint Sauveur  
31000 Toulouse  
T : +33 (0)5 61 22 22 17  
port-saintsauveur@mairie-toulouse.fr

[Website](#)

### Canal des 2 mers

Ramonville



#### [Le Tourmente](#)

Waterways transport  
31520 Ramonville  
tél : +33 (0)6 12 94 47 15  
lequipage31@gmail.com

[Website](#)



# Activities

## Boat : Port & marina /other services

### Gironde Bègles



#### [Port Garonne](#)

rue Louis Blériot  
33130 Bègles  
Tl : 06.18.60.26.78  
plaisance@bordeaux-metropole.fr

[Website](#)

### Gironde Bordeaux



#### [Pontoon d'honor](#)

Quai Richelieu  
33000 Bordeaux  
T : +33 (0)5.56.93.93.56  
plaisance@bordeaux-metropole.fr

[Website](#)

### Gironde Bordeaux



#### [Pontoon of the cité du Vin](#)

150/134 quai de Bacalan  
33000 Bordeaux  
T : +33 (0)5 56 93 93 56  
plaisance@bordeaux-metropole.fr

[Website](#)

### Gironde Castets-en-Dorthe



#### [Port de Castets-en-Dorthe](#)

PMR Friendly  
9, route du Moulin  
33210 Castets-en-Dorthe  
T : +33 (0)6 77 89 66 34  
pierre.seurre@marinov.fr

[Facebook](#)

### Gironde Le Tourne



#### [Les Chantiers Tramasset](#)

Chantiers navals associatifs  
20, Esplanade Josselin  
33550 Le Tourne  
T : +33 (0)5 56 67 61 69  
asso@chantierstramasset.fr

[Website](#)

### Gironde Lestiac-sur-Garonne



#### [Association la Cale](#)

Cale d'accès à la Garonne  
Site de la Cale  
33550 Lestiac sur Garonne  
T : +33 (0)6 12 52 56 95  
assolacale@orange.fr

[Blog](#)

### Garonne Saint-Genès-de-Blaye



#### [Cœur d'Estuaire](#)

Waterways Transport  
13 bis Ségonzac  
33390 Saint Genès de Blaye  
T: +33 (0)6 12 65 32 23  
coeurdestuaire.33@orange.fr

[Website](#)

### Lot-et-Garonne Buzet-sur-Baïse



#### [Aquitaine Navigation](#)

Port de Buzet-Val d'Albret  
47160 Buzet sur Baïse  
T : +33 (0)5 53 84 72 50  
contact@aquitaine-navigation.com

[Website](#)

### Tarn et Garonne Castelsarrasin



#### [Port de plaisance de Castelsarrasin](#)

3Bis allée de Verdun  
82100 Castelsarrasin  
T : +33 (0)5 63 32 01 39  
capitainerie@ville-castelsarrasin.fr

[Website](#)



# Activities

## Boat : port & marina /other services

### Tarn et Garonne

#### Castelsarrasin



#### [Chantier fluvial de Castelsarrasin](#)

PMR Friendly

20 chemin des 2 ponts

82100 Castelsarrasin

T : +33 (0)6 23 84 56 89

T : +33 (0)6 23 25 80 36

chantierfluvialcastel@orange.fr

[Facebook](#)

### Tarn et Garonne

#### Moissac



#### [Port de plaisance de Moissac](#)

Quai Charles de Gaulle

82200 Moissac

T : +33 (0)6.01.23.28.02

ceppmoissac@orange.fr

[Website](#)

### Waterways



#### [BoatStop de Canalfriends](#)

Learn about navigation whilst accompanying a boat owner  
contact@canalfriends.com

[Website](#)

## Canoës & Paddle hire

### Haute-Garonne

#### Gagnac



#### [Canoë 31](#)

Chemin de Catcharry

31150 Gagnac

Tel : +33 (0)6 70 00 63 53

canoe.garonne@gmail.com

[Website](#)

### Gironde

#### Hure



#### [Canoë de Garonne](#)

La Cale 33190 Hure

T : +33 (0)6 77 68 53 75

canoesdegaronne@orange.fr

[Website](#)

## Club

### Gironde

#### Bordeaux



#### [Aqui Naus Association](#)

PMR Friendly

Quai Ouest, Bassin à flot n°2,  
33300 Bordeaux

T : +33 (0)6 59 10 90 02

aquinaus.navigaton@gmail.com

[Facebook](#)

## Cycling: hire bike & services

### Tarn-et-Garonne

#### Verdun-sur-Garonne



#### [Sprinteau Club de Verdun](#)

7 rue de la Résistance

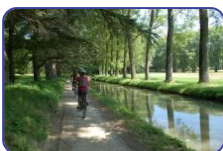
82600 Verdun sur Garonne

T : +33 6 30 37 97

christianvalette@wanadoo.fr

### Haute-Garonne

#### Ramonville



#### [Avélo 31](#)

Rue Jacques Prévert

31520 Ramonville Ste Agne

T : +33(0)6 77 03 24 87

contact@avelo31.fr

[Website](#)

### Haute-Garonne

#### Toulouse



#### [Pierre qui Roule Toulouse](#)

PMR Friendly

2bis rue Boyer Fonfrede

31000 Toulouse

T : +33 (0)9.54.15.01.30

atelier-toulouse@pierrequiroule.fr

[Website](#)



# Activities

## Cycling : hire bike & services

### Haute-Garonne

#### Toulouse



#### [Bagafrance – Luggage transport](#)

26 rue Saint Bruno  
31000 Toulouse  
T : +33 (0)6 41 19 20 11  
[reservation.midi@bagafrance.com](mailto:reservation.midi@bagafrance.com)

[Website](#)

### Gironde

#### Bordeaux



#### [Bordeaux Scooters](#)

47 rue Tauzia  
33800 Bordeaux  
T : +33 (0)5 57 59 10 18  
T : +33 (0)6 86 14 03 49  
[bordeauxscooters@gmail.com](mailto:bordeauxscooters@gmail.com)

[Website](#)

### Gironde

#### Bordeaux



#### [Pierre qui Roule Bordeaux](#)

32 place Gambetta  
33000 Bordeaux  
T : +33 (0)5 57 85 80 87  
[bordeaux-shop@pierrequiroule.fr](mailto:bordeaux-shop@pierrequiroule.fr)

[Website](#)

### Gironde

#### Castets en Dorthe



#### [Les Cycles du Canal](#)

4B rue Grossole  
33210 Castets-en-Dorthe  
T : +33 (0)5 56 27 05 81  
T : +33 (0)6 95 63 20 80  
[contact@lescyclesducanal.com](mailto:contact@lescyclesducanal.com)

[Website](#)

### Lot-et-Garonne

#### Agen



#### [Café Vélo Agen](#)

PMR Friendly  
Rue du Duc d'Orléans  
47000 Agen  
T : +33 (0)5 53 96 15 51  
[info@cafe-velo.net](mailto:info@cafe-velo.net)

[Website](#)

### Lot-et-Garonne

#### Buzet sur Baise



#### [Aquitaine Navigation](#)

Port de Buzet – Val d'Albret  
47160 Buzet sur Baise  
T : +33 (0)5 53 84 72 50  
[contact@aquitaine-navigation.com](mailto:contact@aquitaine-navigation.com)

[Website](#)

### Lot-et-Garonne

#### Meilhan sur Garonne



#### [Camping & base de loisirs Au Jardin](#)

Halte Nautique  
Lieu dit au Jardin  
47180 Meilhan sur Garonne  
T : +33 (0)5 53 88 84 80  
[contact@camping-au-jardin.com](mailto:contact@camping-au-jardin.com)

[Website](#)

## Dance /Music

### Gironde

#### Bordeaux



#### [Dansons sur les quais](#)

PMR Friendly  
14 July to 18 August 2019  
Quai Louis XVIII  
33000 Bordeaux  
[danseavecvous@wanadoo.fr](mailto:danseavecvous@wanadoo.fr)

[Website](#)

## Local produce

### Haute-Garonne

#### Fronton



#### [Maison des vins et du tourisme de Fronton](#)

Château de Capdeville  
140 allée du Château  
31620 Fronton  
T : +33 (0)5 61 82 46 33  
[magasin@france-sudouest.com](mailto:magasin@france-sudouest.com)

[Website](#)



# Activities

## Local food & grocery stores

### Gironde Tabanac



#### [La cabane dans les vignes /Château Bessan](#)

Organic wine producer  
537, allée des Marronniers  
33550 Tabanac  
T : +33 (0)9 82 22 22 77  
contact@chateaubessan.fr  
[Website](#)

### Lot-et-Garonne Buzet-sur-Baïse



#### [Les Vignerons de Buzet](#)

Tourisme & Handicap  
Wine cooperative  
56, av des Côtes de Buzet  
47160 Buzet sur Baïse  
T : +33 (0)5 53 84 17 16  
magasin@vignerons-buzet.fr  
[Website](#)

### Lot-et-Garonne Le Passage d'Agen



#### [Café Launay](#)

Torréfacteur de café  
ZA Beauregard  
47520 Le Passage d'Agen  
T : +33 (0)5 53 48 48 18  
cafelaunay@cafelaunay.com  
[Website](#)

### Lot-et-Garonne Clermont-Soubiran



#### [Château Labastide Orliac](#)

Wine producer  
47270 Clermont Soubiran  
T : +33 (0)6 08 69 02 27  
1780@royal-heritage.eu  
[Website](#)

### Lot-et-Garonne Meilhan sur Garonne



#### [Château Bois Baulieu](#)

Organic wine producer  
Campot  
47180 Meilhan sur G.  
T : +33 (0)5 53 94 18 58  
contact@bois-beaulieu.com  
[Website](#)

### Lot-et-Garonne Montesquieu



#### [La Ferme Roques](#)

PMR Friendly  
Prune producer  
47130 Montesquieu  
T : +33 (0)5 53 68 60 39  
contact@fermeroques.com  
[Website](#)

## Tourist Offices & heritage sites

### Lot-et-Garonne Sérignac sur Garonne



#### [Les Vergers du Pas de la Ville](#)

EARL Fruits de saison  
1491 Avenue du Bruilhois  
47310 Sérignac sur Garonne  
T : +33 (0)6 07 55 10 92

### Haut-Garonne Ramonville



#### [Le Tourmente](#)

Waterways exhibition  
31520 Ramonville  
T : +33 (0)6 12 94 47 15  
lequipage31@gmail.com  
[Website](#)

### Haute Garonne Toulouse



#### [Espace EDF Bazacle](#)

Tourisme & Handicap  
11, quai Saint-Pierre  
31000 Toulouse  
T : 05 62 30 16 00  
visites.edf.bazacle@manatour.fr  
[Website](#)



# Activities

## Tourist offices & Heritage sites

### Gironde Bordeaux



#### [Grand Théâtre de Bordeaux](#)

Tourisme et handicap  
Guided tour  
Place de La Comédie  
33000 Bordeaux  
T : +33 (0)5 56 00 85 95  
[Website](#)

### Gironde Castets-en-Dorthe



#### [Château du Hamel](#)

Guided tour by appointment  
16 route de Langon  
33210 Castets-en-Dorthe  
T : +33 (0)6 64 33 79 74  
tfranc@free.fr

### Gironde Lestiac-sur-Garonne



#### [Association la Cale](#)

Cale d'accès à Garonne  
Site de la Cale  
33 550 Lestiac sur G.  
T : +33 (0)6 12 52 56 95  
assolocale@orange.fr  
[Blog](#)

### Gironde Le Tourne



#### [Les Chantiers Tramasset](#)

Chantiers navals associatifs  
20, Esplanade Josselin  
33550 Le Tourne  
T : +33 (0)5 56 67 61 69  
asso@chantierstramasset.fr  
[Website](#)

### Gironde Saint Macaire



#### [Association Port Nava'l](#)

Chemin de Tivoli  
33490 Saint Macaire  
T : +33 (0)6 08 58 21 93  
jpramillon@hotmail.fr  
[Website](#)

### Lot-et-Garonne Agen



#### [Office de Tourisme Destination Agen](#)

38 rue Garonne  
47000 Agen  
T : +33 5 53 47 36 09  
info@destination-agen.fr  
[Website](#)

### Lot-et-Garonne Couthures/Garonne



#### [Maison des Gens de Garonne](#)

PMR Friendly  
Site de découverte de la Garonne  
Rue Lacave  
47180 Couthures/Garonne  
T: +33 (0)5 53 20 67 76  
gensdegaronne@gmail.com  
[Website](#)

### Lot-et-Garonne Le Passage d'Agen



Jean Marie Catrou  
47520 Le Passage d'Agen  
T : +33 (0)5 53 96 00 10

### Lot-et-Garonne Marmande



#### [Office de Tourisme Val de Garonne](#)

PMR Friendly  
11 Rue Toupinerie  
47200 Marmande  
T : +33 (0)5 53 64 44 44  
infos@valdegaronne.com  
[Website](#)



# Activities / Cafés & restaurants

## Tarn-et-Garonne

### Moissac



#### [Abbaye de Moissac](#)

6 place Durand de Bredon

82200 Moissac

T : +33 (0)5 63 04 01 85

[tourisme@moissac.fr](mailto:tourisme@moissac.fr)

[Website](#)

## Transport

### Haute-Garonne

#### Toulouse



#### [Bagafrance – Luggage transport](#)

26 rue Saint Bruno

31000 Toulouse

T : +33 (0)6 41 19 20 11

[reservation.midi@bagafrance.com](mailto:reservation.midi@bagafrance.com)

[Website](#)

## Cafés /restaurants

### Haute-Garonne

#### Toulouse



#### [L'Occitania](#)

**-10% : code Canalfriends**

Bateau restaurant

Face au 4 Bld Bonrepos

31000 Toulouse

T : +33 (0)5 61 257 257

[infos@toulouse-croisieres.com](mailto:infos@toulouse-croisieres.com)

[Website](#)

## Gironde

### Bassanne



#### [Ecluse 50](#)

33190 Bassanne

T : +33 (0)5 24 25 10 16

T : +33 (0)6 66 55 15 31

[pepeschultz33@gmail.com](mailto:pepeschultz33@gmail.com)

## Gironde

### Bordeaux



#### [Le Jardin Pêcheur](#)

PMR Friendly

Restaurant solidaire

Bassins à flot

33000 Bordeaux

T : +33 (0)5 56 10 88 68

[bordeaux@lejardinpecheur.com](mailto:bordeaux@lejardinpecheur.com)

[Website](#)

## Gironde

### Bordeaux



#### [Lunch cruise in Bordeaux](#)

Boat trip

24, quai Deschamps

33100 Bordeaux

T : +33 (0)6 16 98 12 66

[contact@aquitaine-cruises.com](mailto:contact@aquitaine-cruises.com)

[Website](#)

## Gironde

### Bordeaux



#### [Bordeaux River Cruise](#)

PMR Friendly

24, quai des Chartrons

33000 Bordeaux

T : +33 (0)5 56 39 27 66

[contact@bordeaux-river-cruise.com](mailto:contact@bordeaux-river-cruise.com)

[Website](#)

## Lot-et-Garonne

### Agen



#### [Café Vélo Agen](#)

PMR Friendly

Rue du Duc d'Orléans

47000 Agen

T : +33 (0)5 53 96 15 51

[info@cafe-velo.net](mailto:info@cafe-velo.net)

[Website](#)

## Lot-et-Garonne

### Bon Encontre



#### [La Table d'Antan](#)

Hôtel Restaurant

41 rue de la République

47240 Bon Encontre

T : +33 (0)5 53 77 97 00

[tabledantan@yahoo.fr](mailto:tabledantan@yahoo.fr)

[Website](#)



# Restaurants

## Restaurants

### Lot-et-Garonne

Buzet sur Baïse



#### [Le Goujon qui frétille](#)

39 boulevard de la République

47160 Buzet sur Baïse

T : +33 (0)5 53 84 26 51

[aubergedugoujon@gmail.com](mailto:aubergedugoujon@gmail.com)

### Lot-et-Garonne

Fourques sur Garonne



#### [Auberge de l'Escale](#)

PMR Friendly

Pont des Sables

47200 Fourques-sur-Garonne

T : +33 (0)5 53 93 60 11

[restaurant@aubergedelescale.fr](mailto:restaurant@aubergedelescale.fr)

[Facebook](#)

### Lot-et-Garonne

Le Passage d'Agen



#### [Café Launay](#)

ZA Beauregard

47520 Le Passage d'Agen

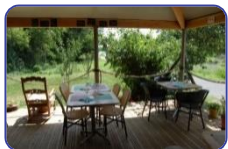
T : +33 (0)5 53 48 48 18

[cafelaunay@cafelaunay.com](mailto:cafelaunay@cafelaunay.com)

[Website](#)

### Lot-et-Garonne

Saint-Jean-de-Thurac



#### [Auberge de La Poule à Vélo](#)

PMR Friendly

Free glass house aperitif : code

Canalfriends

Lieu dit Mouynes

Ecluse 33 de St Christophe

47270 Saint Jean de Thurac

T : +33 (0)5 53 68 41 17

[lapouleavelo@live.fr](mailto:lapouleavelo@live.fr)

[Website](#)

### Lot-et-Garonne

Sérignac-sur-Garonne



#### [Restaurant l'Escale](#)

1 place de l'hôtel de Ville

47310 Sérignac / Garonne

T : +33 (0)5 53 95 38 79

[Escale.serignac@yahoo.com](mailto:Escale.serignac@yahoo.com)

[Facebook](#)

### Lot-et-Garonne

Villeton



#### [La Chope et le Pichet](#)

PMR Friendly

Maison éclusière 42

Lieu-dit Saint Christophe

47400 Villeton

T : +33 (0)5 53 83 13 49

[lachope-et-lepichet@orange.fr](mailto:lachope-et-lepichet@orange.fr)

[Website](#)

### Tarn-et-Garonne

Bourret



#### [Les jardins de la Fanette](#)

PMR Friendly

RD 928 Route d'Auch

lieu dit Barbazan

82700 Bourret

T : +33 (0)5 63 64 83 69

[lesjardinsdelafanette@gmail.com](mailto:lesjardinsdelafanette@gmail.com)

[Website](#)

### Tarn-et-Garonne

Dieupentale



#### [L'Oguste](#)

Allée du Canal

82170 Dieupentale

T : +33 (0)5 63 24 01 12

[contact@logusterestaurant.com](mailto:contact@logusterestaurant.com)

[Website](#)



# Accommodation

## Accommodation

### Charente Maritime

#### Mortagne sur Gironde



##### [Le Domaine du Meunier](#)

PMR friendly

36, Quai de l'Estuaire  
17120 Mortagne sur G.  
T : +33 (0)5 46 97 75 10  
info@domainedumeunier.com

[Website](#)

### Charente Maritime

#### Saint Fort sur Gironde



##### [Camping Port Maubert](#)

8 Rue de Chassillac  
17240 Saint Fort sur G.  
T : +33 (0)5 46 04 78 86  
bourdieu.jean-luc@wanadoo.fr  
[Website](#)

### Gironde

#### Bordeaux



##### [Guestroom in the heart of Bordeaux](#)

24, quai Deschamps  
33100 Bordeaux  
T : +33 (0)6 16 98 12 66  
contact@aquitaine-cruises.com  
[Website](#)

### Gironde

#### Bourdelles



##### [Le Relais de Garonne](#)

PMR Friendly

Chambres d'hôtes  
10 Le Bourg  
31190 Bourdelles  
T : +33 (0)5 56 61 73 64  
T : +33 (0)6 81 28 91 28  
baillonmichel@orange.fr  
[Website](#)

### Gironde

#### La Réole



##### [La Parenthèse](#)

Chambres d'hôtes  
22 rue Lagrave  
33190 La Réole.  
T : +33 (0)6 07 25 67 29  
laparenthese.lareole@gmail.com  
[Website](#)

### Lot-et-Garonne

#### Agen



##### [Café Vélo Agen](#)

PMR Friendly  
Dormitory  
Rue du Duc d'Orléans  
47000 Agen  
T : +33 (0)5 53 96 15 51  
info@cafe-velo.net  
[Website](#)

### Lot-et-Garonne

#### Bon Encontre



##### [La Table d'Antan](#)

Hôtel Restaurant  
41 rue de la République  
47240 Bon Encontre  
T : +33 (0)5 53 77 97 00  
tabledantan@yahoo.fr  
[Website](#)

### Lot-et-Garonne

#### Buzet-sur-Baïse



##### [Aquitaine Navigation](#)

Camping car park Port de Buzet  
47160 Buzet sur Baïse  
T : +33 (0)5 53 84 72 50  
contact@aquitaine-navigation.com  
[Website](#)

### Lot-et-Garonne

#### Meilhan sur Garonne



##### [Château Bois Baulieu](#)

Gites  
Campot  
47180 Meilhan sur G.  
T : +33 (0)5 53 94 18 58  
contact@bois-beaulieu.com  
[Website](#)



# Accommodation /Resources

## Accommodation

### Lot-et-Garonne

Meilhan sur Garonne



#### [Camping et base de loisirs Au Jardin](#)

Halte Nautique  
Lieu dit au Jardin  
47180 Meilhan sur Garonne  
T : +33 (0)5 53 88 84 80  
[contact@camping-au-jardin.com](mailto:contact@camping-au-jardin.com)  
[Website](#)

### Lot-et-Garonne

Montesquieu



#### [La Ferme Roques](#)

Camping car park  
47130 Montesquieu  
T : +33 (0)5 53 68 60 39  
[contact@fermeroques.com](mailto:contact@fermeroques.com)  
[Website](#)

### Lot-et-Garonne

Montesquieu



#### [Gîte & chambres d'hôtes de Sauvin](#)

PMR Friendly  
Sauvin Est  
47130 Montesquieu  
T : 05 53 95 21 56 - 06 42 22 82 33  
[pm.amizet@orange.fr](mailto:pm.amizet@orange.fr)

### Lot-et-Garonne

Saint Jean de Thurac



#### [Auberge de La Poule à Vélo](#)

restaurant & B&B  
Lieu dit Mouynes  
écluse 33 de St Christophe  
47270 St Jean de Thurac  
T : +33 (0)5 53 68 41 17  
[lapouleavelo@live.fr](mailto:lapouleavelo@live.fr)  
[Website](#)

### Lot-et-Garonne

Saint Jean de Thurac



#### [Les Peupliers](#)

B&B  
Lieu dit a guillemis  
47270 St Jean de Thurac  
T : +33 (0)5 53 95 79 38  
T : +33 (0)6 05 67 98 15  
[kateguijarro@gmail.com](mailto:kateguijarro@gmail.com)  
[Website](#)

### Tarn-et-Garonne

Dieupentale



#### [L'Oguste](#)

Caravan  
Allée du Canal  
82170 Dieupentale  
T : +33 (0)5 63 24 01 12  
[contact@logusterestaurant.com](mailto:contact@logusterestaurant.com)  
[Website](#)

### Tarn-et-Garonne

Montauban



#### [Le Rosa](#)

Unusual accommodation  
Port Canal  
82000 Montauban  
tél : +33 (0)6 32 32 42 49  
[contact@rivesdusud.com](mailto:contact@rivesdusud.com)  
[Website](#)

### Tarn-et-Garonne

Valence d'Agen



#### [Le Jardin du Contrôleur](#)

Room  
Maison de garde Ecluse n° 30  
82400 Valence d'Agen  
tél : +33 (0)6 60 44 58 04  
[lejardinducontroleur@free.fr](mailto:lejardinducontroleur@free.fr)  
[Facebook](#)

## Resources



VNF

[Direction Territoriale Sud Ouest](#)

[Archives des canaux du Midi](#)

2 Port Saint Etienne

31000 Toulouse

T : +33 (0)5 61 36 24 24

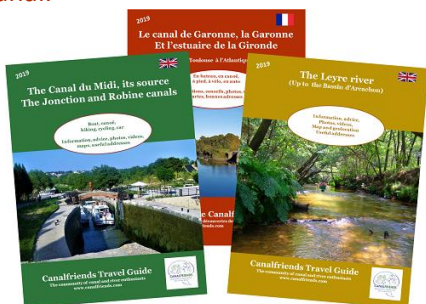
[Website](#)



## A community of waterways enthusiasts and professionals

Did your stay give you the desire to come back again? [Download our other free e-guides in French and English.](#)

The e-guide on the Canal du Midi, its channels and the canals Jonction & La Robine will give you an overview of the canal des 2 mers (canal of the 2 seas) to Sète and Port La Nouvelle, as well as its water supply system. The e-guide on the Leyre to the Bassin d'Arcachon will help you discover this small coastal river, sometimes referred to as the "Little Amazon" that transforms into a delta as it flows into the bassin d'Archachon. A map shows you how to get there via the cycle path from the Garonne Canal.



### You like CANALFRIENDS.

Help us produce new free guides and devise new projects for the canal communities. Participate in the adventure by making a donation => [Here](#)

### For further information :

Website : <http://www.canalfriends.com/>  
Facebook : <https://www.facebook.com/canalfriends.fr/>  
Instagram : [https://www.instagram.com/canal\\_friends/](https://www.instagram.com/canal_friends/)  
Twitter : [https://twitter.com/Canal\\_Friends](https://twitter.com/Canal_Friends)

### Contact us:

contact@canalfriends.com  
Tél : 05 53 96 72 50

Rivière Développement/Canalfriends is member of



Join Canalfriends, the community of waterways professionals and enthusiasts.

We can help you plan your waterways holiday

- Discover BoatStop by accompanying boat owners on their normal journeys and learn the techniques that will help you sail serenely with a group or on your own.
- Take part in our waterways discovery events and experience the passion of enthusiasts and professionals.
- Get free advice from our team in planning your waterways vacation with friends, family or on your own. Find the best offers for you.

Tourism professionals; list your accommodation and activity on our bilingual platform.



Copyrights on all the photos: Rivière Développement, photographs of advertisers and guide contributors. The Canalfriends guide "Garonne Canal, River Canal and the Gironde Estuary" is published by RIVIERE DEVELOPPEMENT According to the terms of the [Creative Commons Attribution licence -Not for Commercial Use - May not be modified 4.0 International licence](#)

